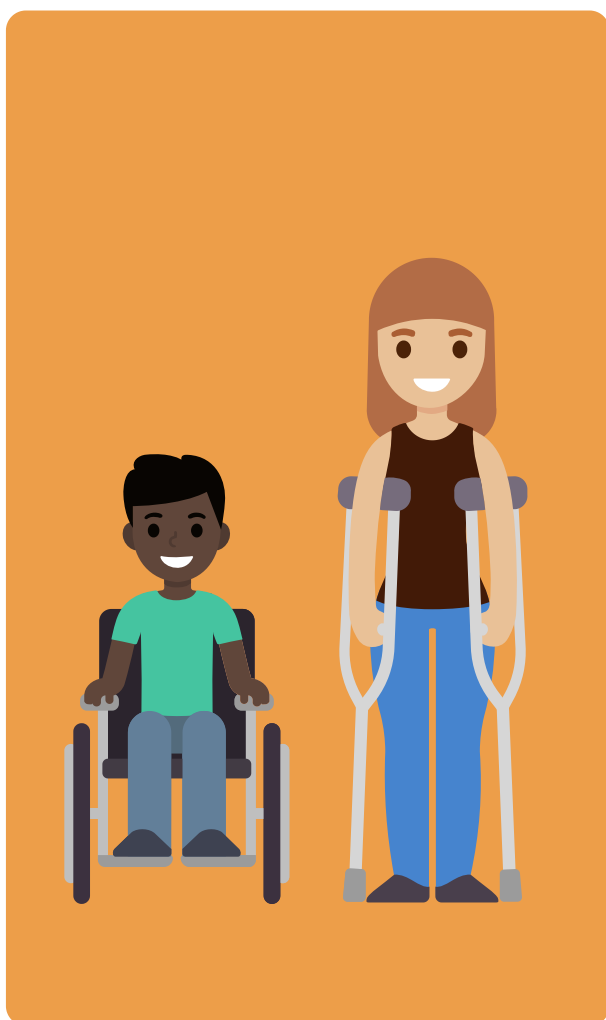


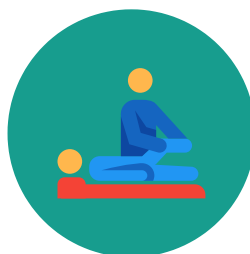


Moving & Handling

Some of our pupils need physical support to access the curriculum or to manage their personal care. All of our staff are trained in moving and handling to ensure that pupils are always moved safely.



When pupils are identified as having moving & handling needs, an assessment is undertaken by the moving and handling assessor about how a pupil can be safely supported to move.



Some pupils may have a physiotherapist or occupational therapist who will provide staff with guidance on supporting pupils mobility.



Staff must follow the guidance provided by the moving & handling trainer and or NHS therapy staff.



Where pupils have moving & handling needs they will have a moving and handling plan that is updated at annually or as and when needed.

When pupils are supported with their moving and handling, the safety and dignity of the pupil is always of the highest priority. Pupils will be supported to understand what will happen during transitional changes - staff will tell a pupil what is going to happen and may provide additional support such as on-body signing.